

# Administrative Data Cooperation – Statistics Finland

Ville-Matti Pilviö  
Business Registry – Data Collection  
Statistics Finland.  
24.9.2023

# Content

1. Intro: Statistics Finland and myself
2. Cooperation with Administrative Data Providers
3. Quality check of Administrative Data Sources
4. Dataflow
5. Internal and external Users of the SBR



## Ville-Matti Pilviö

- Senior Statistician – Business Statistics
- Statistics Finland: 12 years – so a relative newcomer
- Statistical Programming and software development
- Badminton
- Fishing

 @VPilvio

 /villenilvio  
firstname.pilvio@stat.fi

 +358 29 591 3502



**624**

statistical releases

**840** experts, of whom

**150** statistical interviewers

**3.57** personnel job satisfaction index, on a scale of 1-5



**Funding**

**EUR 51.5 millio**  
from the state budget

**EUR 8.5 million**  
income from charged services



**156** years  
of data and statistics



**150**  
statistics



**4 700**

tables in the database

**Data needed for statistics**



**95%** from registers  
**5%** with inquiries

95.5% of inquiries could be answered online

**Statistical inquiries**

**168 000** responses from organisations  
**181 000** responses from persons and households

for researchers

**423** user licences

**204** data deliveries



**1 048**

service deliveries subject to charge



**90%**  
of Finns know  
Statistics Finland

**90%**  
of Finns consider  
Statistics Finland impartial



**8 000**

contacts answered by the information service



**16 500**

followers on Twitter

**3.8 million**

users on the **stat.fi** website

Read more: [stat.fi](http://stat.fi)

# Business Statistics:

## Statistics under the topic Enterprises:

<https://stat.fi/en/topic/enterprises>

Accommodation statistics	Foreign trade in fish	Providers of education and educational institutions
Air emission accounts	Foreign trade in roundwood and forest industry products	Regional statistics on entrepreneurial activity
Aquaculture	Foreign trade of goods	Renovation building
Bankruptcies and business restructuring proceedings	Horticultural statistics	Research and development
Commercial fellings	Index of turnover in industry	Statistics on business subsidies
Commercial inland fishery	Index of turnover of construction	Statistics on cereals and protein and oilseed purchased, used and stockpiled
Commercial marine fishery	Industrial output	Statistics on service industry commodities
Crop production statistics	Innovation	Statistics on the finances of agricultural and forestry enterprises
CVTS, continuing vocational training	Job vacancy survey	Structural business and financial statement statistics
Egg production	Labour cost index	Structure in agriculture and horticulture businesses
Energy use in manufacturing	Labour cost survey	Turnover of service industries
Enterprise openings and closures	Meat production	Turnover of trade
Environmental goods and services sector	Milk and milkproducts statistics	Use of crops on farms
Environmental protection expenditure accounts	New orders in manufacturing	Use of information technology in enterprises
Environmental taxes	Number of livestock	Volume index of industrial output
Finnish affiliates abroad	Operating profit in non-industrial private forestry	Volumes and prices in industrial roundwood trade
Fish processing	Other entrepreneurship in agriculture and horticulture	Wage and salary indices
Flows of wood material	Private sector hourly wages	
Foreign affiliates in Finland	Private sector monthly salaries	
Foreign direct investments	Producer price indices for services	
Foreign trade in agri-food products	Production of electricity and heat	

# YTY: An Integrated production system for Business Statistics (2013 -> )

YTY is a (very) large system

- It is based on our Statistical Business Registry
  - Used for different business statistics
- Key Concept:
  - Integrate all Business Statistics into one central production system
- Further integration is ongoing:
  - Tourism statistics
  - Education organizers and locations
  - More are being integrated



# YTY: Currently producing these statistics

Structural business and financial statement statistics (preliminary t+9, final t+12)

Regional statistics on entrepreneurial activity (t+12)

Industrial output (t+11)

Enterprise openings and closures (Q1:t-5, Q2:t-2, Q3:t+1, Q4:t+4,)

Index of turnover in industry (t+75 days)

Index of turnover of construction (t+75 days)

Turnover of trade (preliminary t+22 and t+45 days, final t+75 days)

Turnover of service industries (t+75 days)

Wage and salary indices (t+45 days)

International trade in services (preliminary t+5, final t+12)

Foreign affiliates in Finland (FATS) (t+12)

Finnish affiliates abroad (FATS) (t+16)

Business Services Statistics (t+10)

Business demography (t+12...18)

Registrations and bankruptcies (t+40 days)

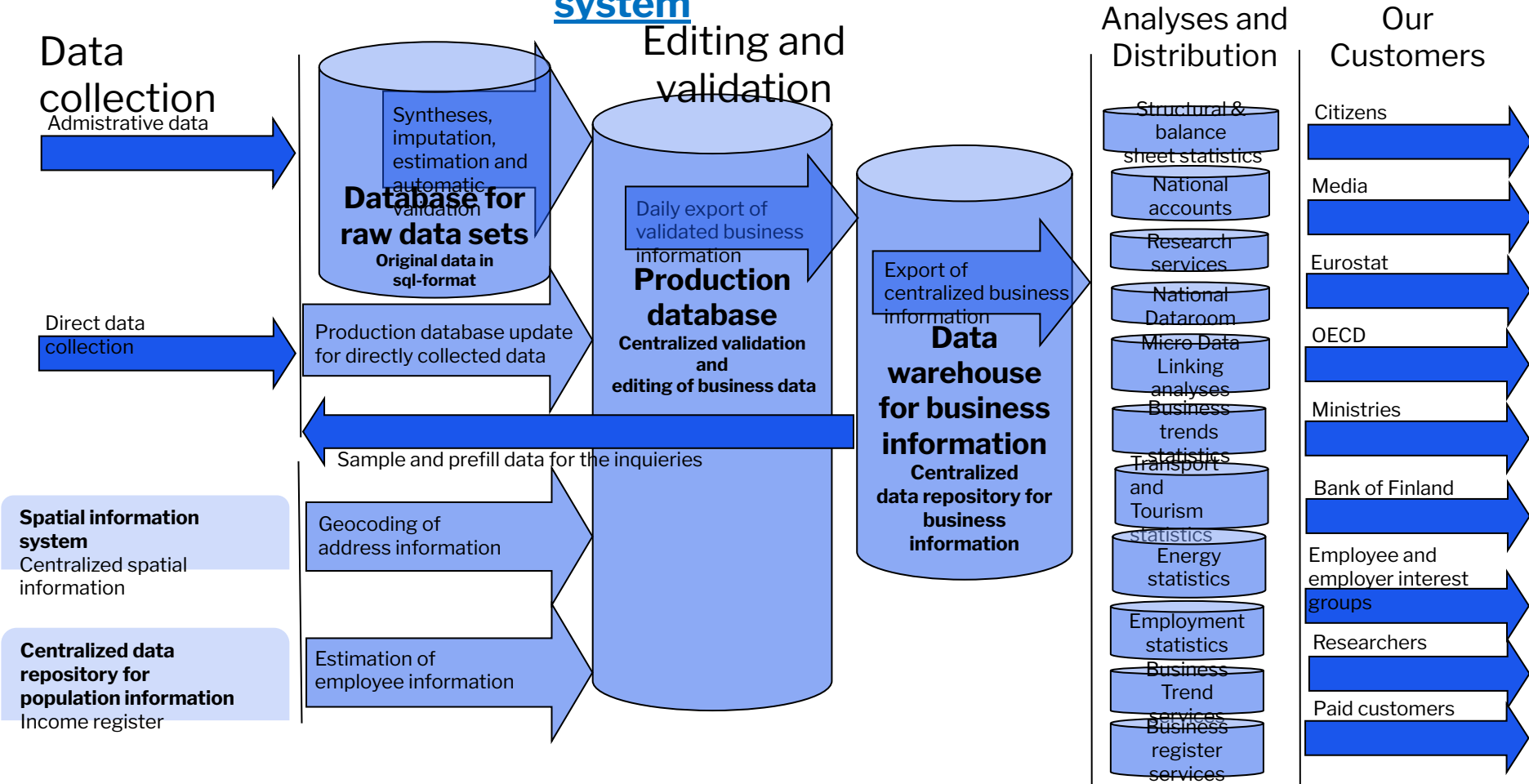
+ Chargeable services

+ Research services



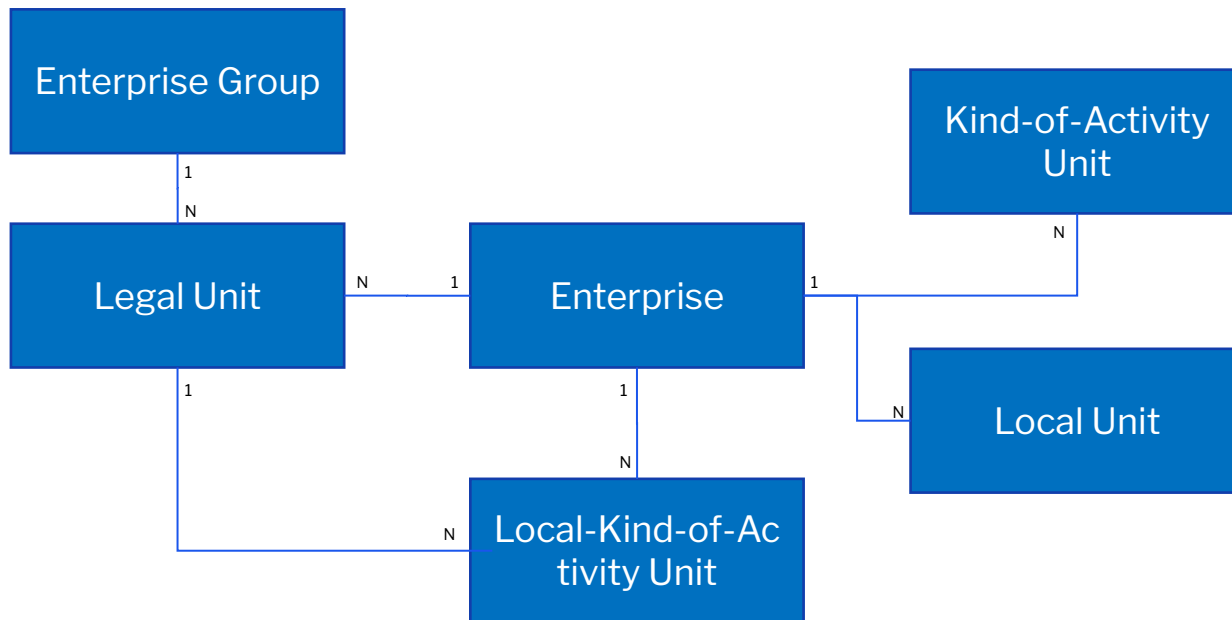
# YTY – Business Information System

## Business information system





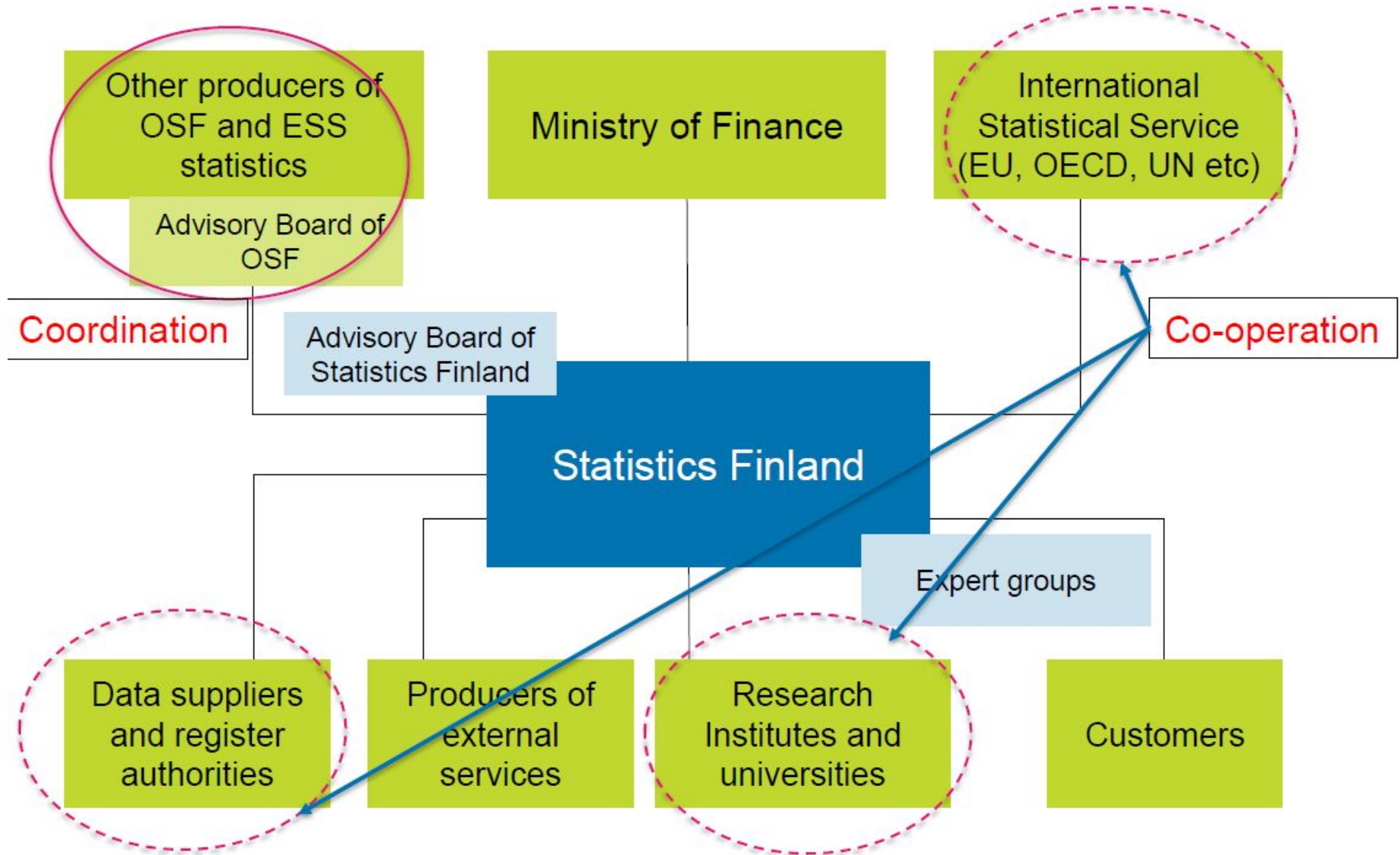
# Unit Structures and Relationships



# Internal and External Users of the SBR



# Stakeholders, coordination and co-operation



# Legal basis for the use of administrative data

- [Fundamental principles of official statistics](#), (1994)
  - **Principle 5.** Data for statistical purposes may be drawn from all types of sources, be they statistical surveys or **administrative records**. Statistical agencies are to choose the source with regard to quality, timeliness, costs and the burden on respondents.
- EU regulation 223/2009 and its amendment [759/2015](#), **Article 17a**
  - 1. the NSIs ... shall have the right to **access and use, promptly and free of charge, all administrative records** and to integrate those administrative records with statistics, to the extent necessary for the development, production and dissemination of European statistics
  - 5. The NSIs and owners of administrative records shall establish the necessary **cooperation mechanisms**.
- [Statistics Act](#) (280/2004) of Finland
  - Section 4: When data are collected for statistical purposes the **primary exploited sources shall be data accumulated in administering** the tasks of general government

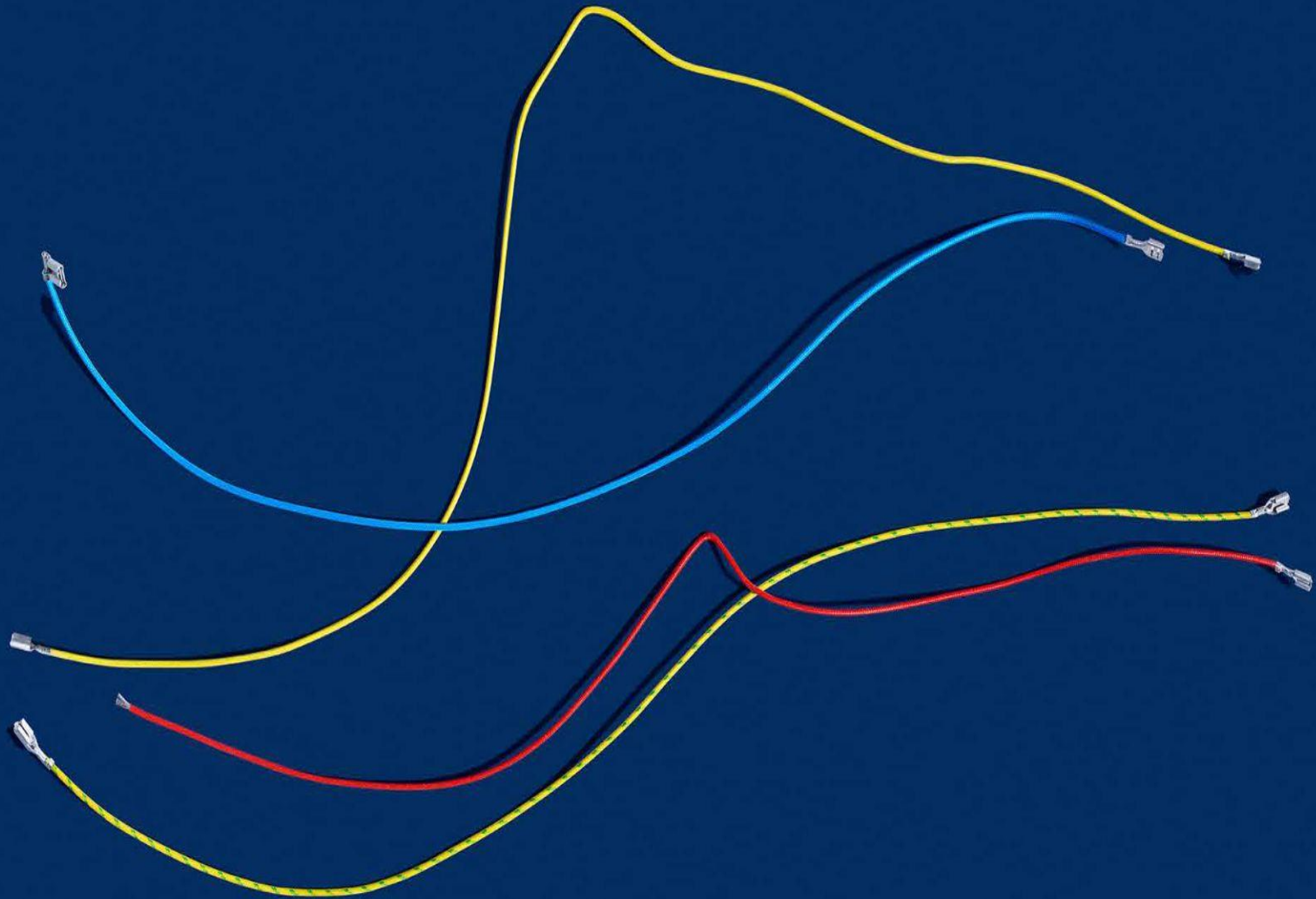


# European Statistics Code of Practice (CoP), principles 2 and 8

- Article 11 of EU Statistical Law explains the meaning of CoP
- Principle 2: Mandate for data collection
  - 2.1: The mandate of the statistical authorities to collect information for the development, production and dissemination of European Statistics is specified in law.
  - 2.2: **The statistical authorities are allowed by law to use administrative data for statistical purposes.**
- Principle 8: Appropriate Statistical Procedures
  - 8.7: Statistical authorities are involved in the design of administrative data in order to make administrative data more suitable for statistical purposes.
  - 8.8: **Agreements are made with owners of administrative data which set out their shared commitment to the use of these data for statistical purposes.**
  - 8.9: Statistical authorities co-operate with owners of administrative data in assuring data quality.
- <https://ec.europa.eu/eurostat/web/quality/european-quality-standards/european-statistics-code-of-practice>



# Cooperation with Administrative Data Providers – Statistics Finland



# What is administrative data?

- No definition in statistical legislation
- Data collected primarily for administrative purposes, as a result of administrative processes and decision making
- Kept and maintained by various state offices belonging to different administrative sectors
- Administrative registers are regulated by laws (right to collect, store, release, ect.)



# Cooperation with data providers

- Bilateral data transmission **agreements** between Statistics Finland and the owners of administrative registers and data
- Discussions at High-level meetings (Director Generals) 1-2 years interval
- Discussions on expert level on monthly or short term intervals
- Identified contact persons for data transmission guarantees continuous and regular co-operation
- **Information request** – when data is needed only once



# Content of data transmission agreements

- More specific matters are agreed in the **data transmission agreement**:
  - Data release principles
  - Storage of released data
  - Data secrecy and protection
  - Data delivery (in appendix or here)
  - Compensation of costs
  - Contact Persons
  - Appendices of agreement (deliveries, technical matters, variables)
  - Validity and copies of agreement
  - Signatures
- **Information request** – when data is needed only once or asked first time
  - By email? Delivery, variables, etc



# Appendix A: Data deliveries

File names	Delivery frequency	Delivery schedule	Delivery mode	Delivery method	File size category (S-M-L)*	SF: contact persons for data content	XX: Contact persons
						First name Last name, firstname.lastname@stat.fi tel. +358 29 551 xxxx	First name Last name, first-name.lastname@xxxx. xx tel. xxx xxxx

*File names are of the form del\_data\_timeref\_part, where*

- 1. del: Identifier of the data supplier (e.g. official abbreviation) This part is always the same,
- 2. data: Name describing the data file or part of it
- 3. timeref: The identifier for earlier and future data deliveries consisting of
  - a) year specifier y20xx (mandatory data) and if necessary
  - B) quarter q1-q4 or period p1-px or month m01-m12 or week w01-w53
- 4. A possible piece indicating the file part used for all large deliveries requiring division of data: o01-o99



# Appex B: Technical matters related to data delivery

- Exporting files –basic data:
  - Data supplier, technical contact person
  - Supply method (server)
- Data files the supplier sends to SF server
  - Server name
  - Trasfer protocol
  - Authentication practice
  - Sender's identifiers (id and password given by SF)
- Data files that SF retrieves from supplier's server
  - Server name /IP-adress
  - SF identifiers
  - Authentication practice



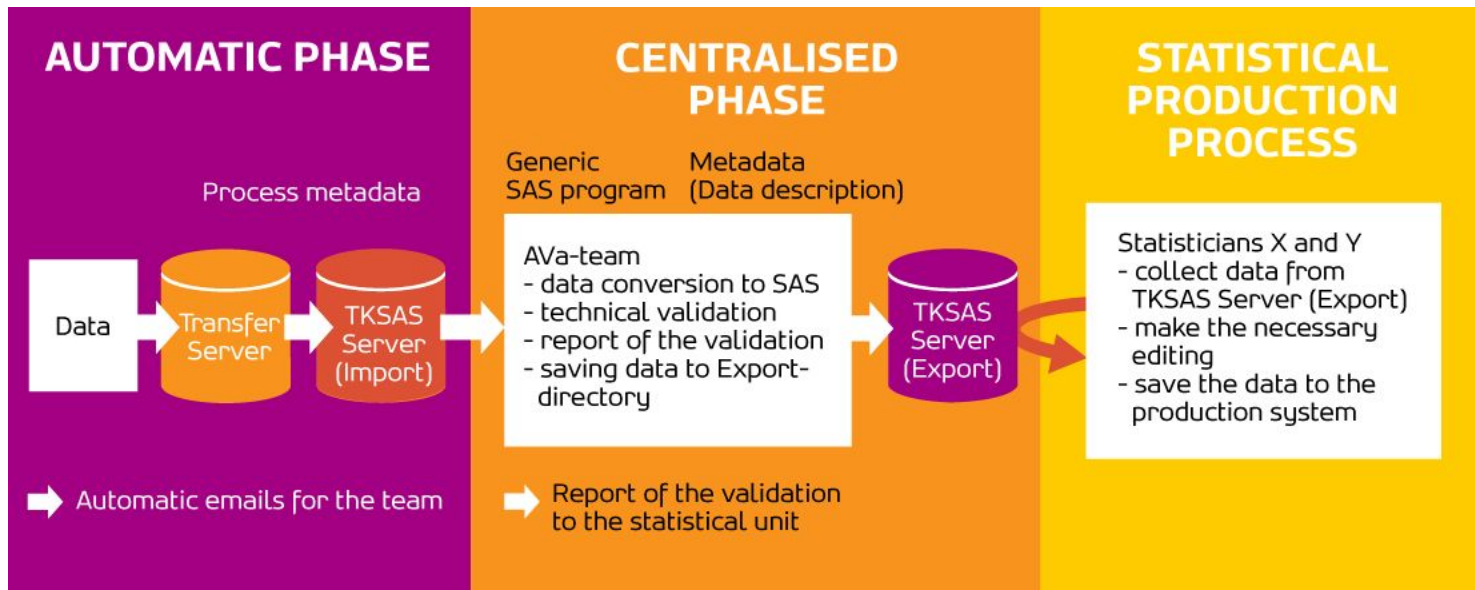
# National Board of Administrative Data Suppliers and Users

- This was in active use in Finland in the 1990s and 2000s – during the initial phases of using Administrative Data for Statistical Production
- It allowed a regular channel for suppliers and users to interact
- It was very beneficial to bring about a “cultural change” in developing a collaborative, cooperative mentality between the AD Suppliers and Users
- Personal interaction
- Understanding why Users wanted access to the data
- Building trust that the data will not be misused

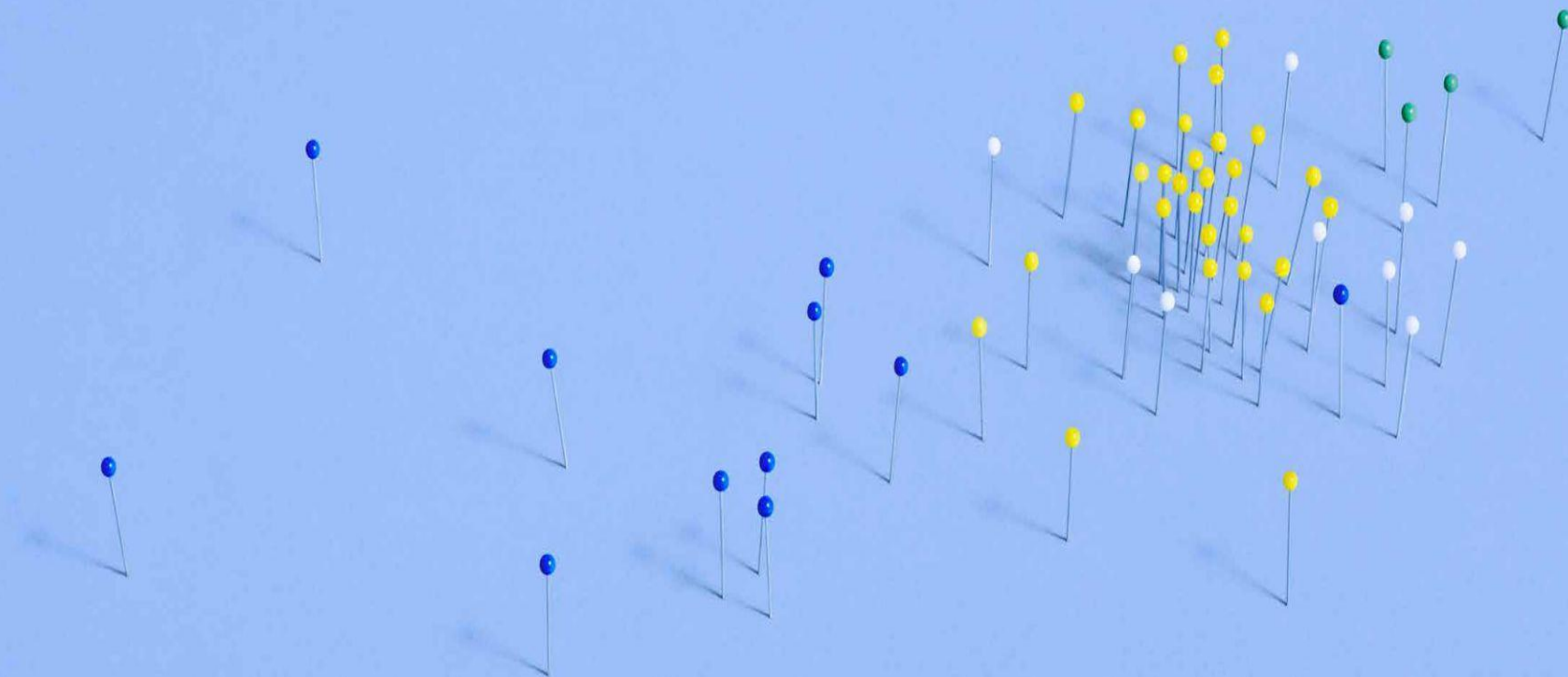


# Phases of administrative data collection system

- The system consists of three phases: automatic phase, centralised phase and statistical production process.

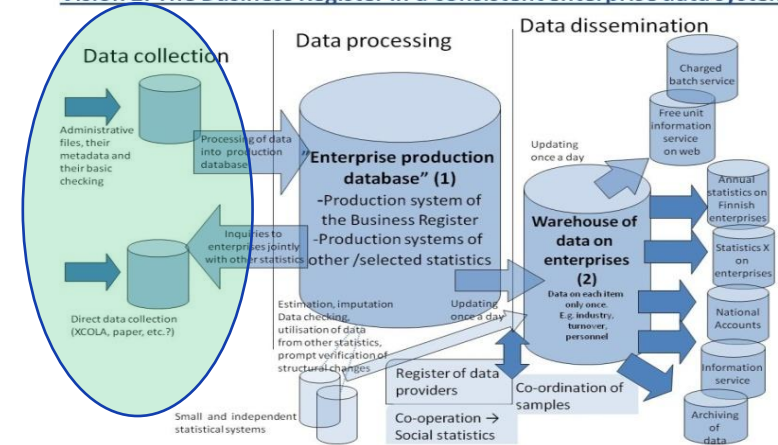


# Quality check of Administrative Data



# ETL1

## Vision 2: The Business Register in a consistent enterprise data system



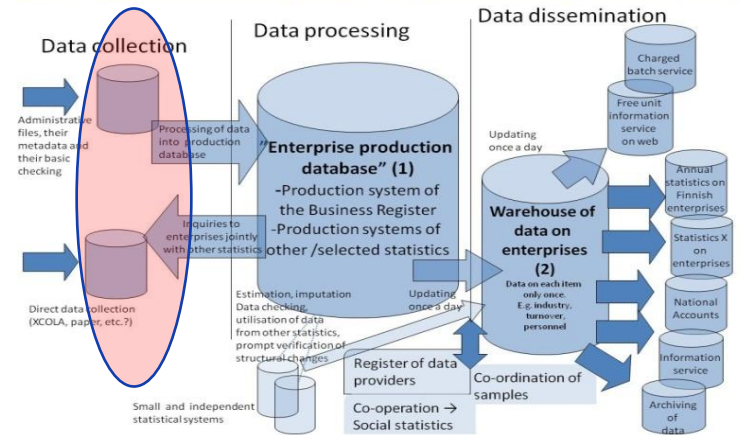
## Data Arriving into YTY:

- Administrative data
- Data from direct collections (Surveys)
- These are implemented by standardised procedures
- ETL: Extract – Transfer – Load.



# Raw Data Collection Warehouses

## Vision 2: The Business Register in a consistent enterprise data system



- All data entering StatFin enters through one “door” – AVA (standard entry point)
- Is now in safe keeping and in a usable format
- No corrections are made to this data contents
- Data are technically corrected (formats)
- Validity of data has been established
- Source data must be described in the **metadata** system
- Standardised Quality controls (meta-controlled) of data entering by “type”





# Thank You - Kiitos!